

CCProxy

Proxy Server for

Win98/NT/2000/XP/2003/Vista/2008

www.youngzsoft.net

Start Problem

youngzsoft

2009.02

1 Port Conflicts

If you get error message likes (Figure 1) when you start CCProxy, it means there is a port conflict problem. Two applications using the same socket port will cause a port conflict.

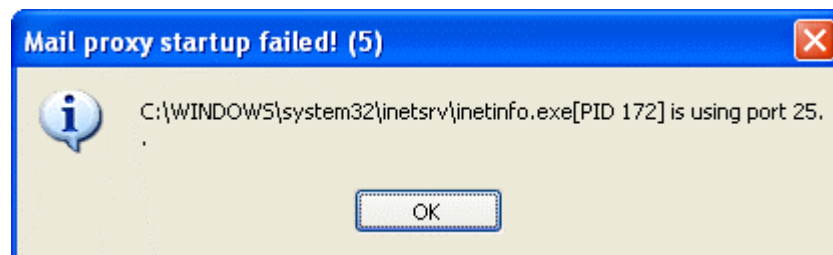
First of all, make sure that the installed CCProxy is the latest version. If there is some other programs are using the same ports as CCProxy, CCProxy will report proxy service startup failed. CCProxy will report which program is using the same port. You can open the program settings and change the port in using or even stop it, and restart CCProxy when done.

Mail proxy startup failed

It's normally related with the following software on the server -

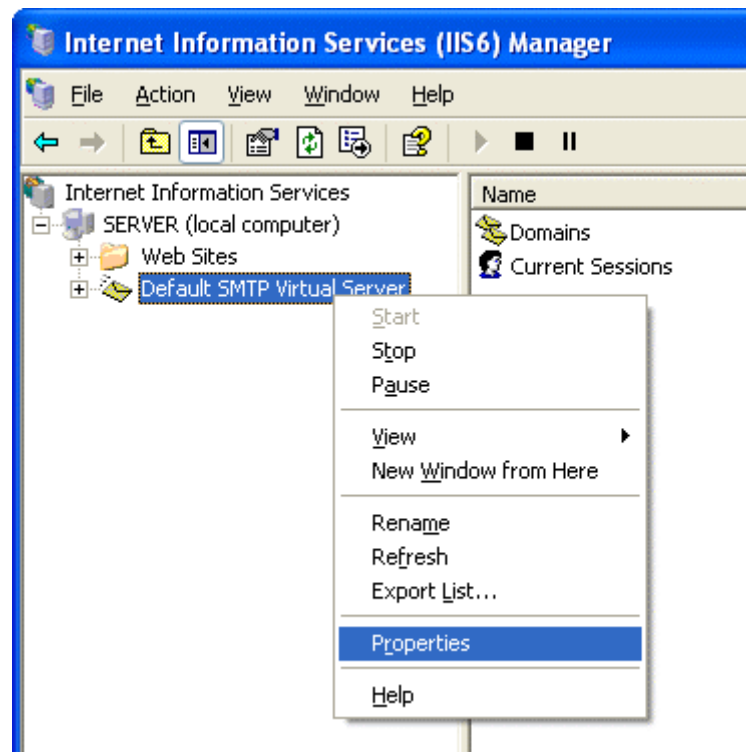
- Microsoft IIS SMTP server
- Other mail server software

If CCProxy reports likes (Figure 1), you can follow the steps at below to resolve it.



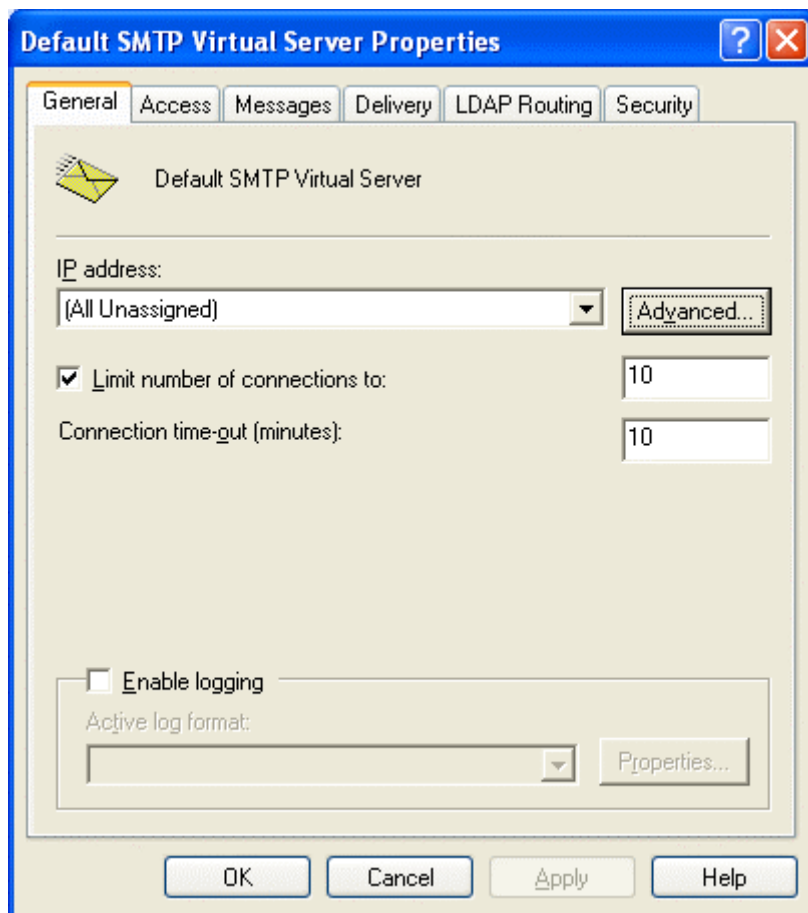
(Figure 1)

1. Go to Windows "Control Panel", "Administrative Tools" and open "Internet Information Services".
2. Select "Properties" on the right menu of "Default SMTP Virtual Server" (Figure 2).



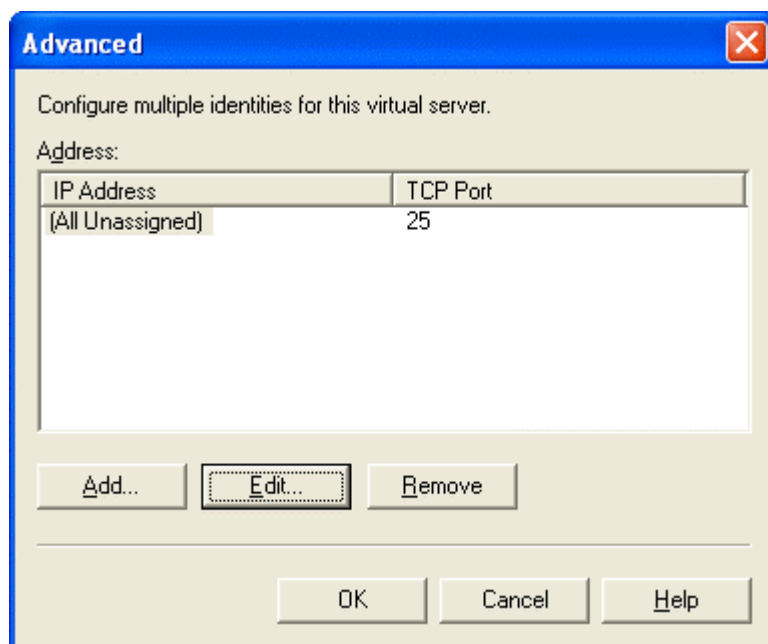
(Figure 2)

3. Click "Advanced" button on the properties dialog box (Figure 3).



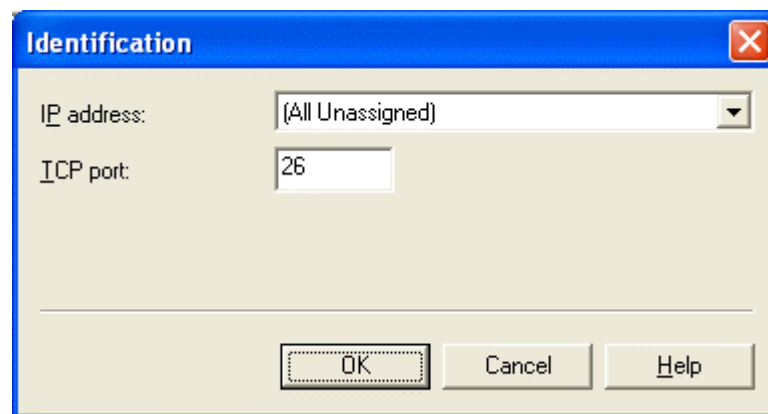
(Figure 3)

- 4. Select the first item and click "Edit" on the advanced dialog box (Figure 4).



(Figure 4)

5. Change "TCP port" to 26, and click "OK" button (Figure 5).



(Figure 5)

6. Click "OK" button on the advanced dialog box and properties dialog box.
7. Restart CCProxy.

SOCKS proxy startup failed

It's normally related with the following software on the server -

- Other proxy server software

News proxy startup failed

It's normally related with the following software on the server -

- Microsoft NEWS server

Telnet proxy startup failed

It's normally related with the following software on the server -

- Microsoft Telnet server

Port map proxy startup failed

You need check port map settings of CCProxy if there are same local ports or the local ports are conflict with other software on the server.

2 Contact

support@youngzsoft.net

Please read the FAQ and email to us if you have additional questions or problems.

sales@youngzsoft.net

Currently our products are only distributed on the Internet. If you are interested in exchanging links with us, or would like to help us with physical distribution, promotion in software compilations, or business cooperation, kindly let us know! We are open to various levels of cooperation.

Homepage: <http://www.youngzsoft.net/ccproxy/>

How to Purchase: <http://www.youngzsoft.net/ccproxy/purchase.htm>

FAQs: <http://www.youngzsoft.net/ccproxy/faq.htm>

Feedback: <http://www.youngzsoft.net/ccproxy/contact.htm>